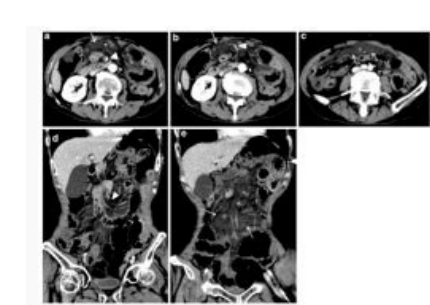
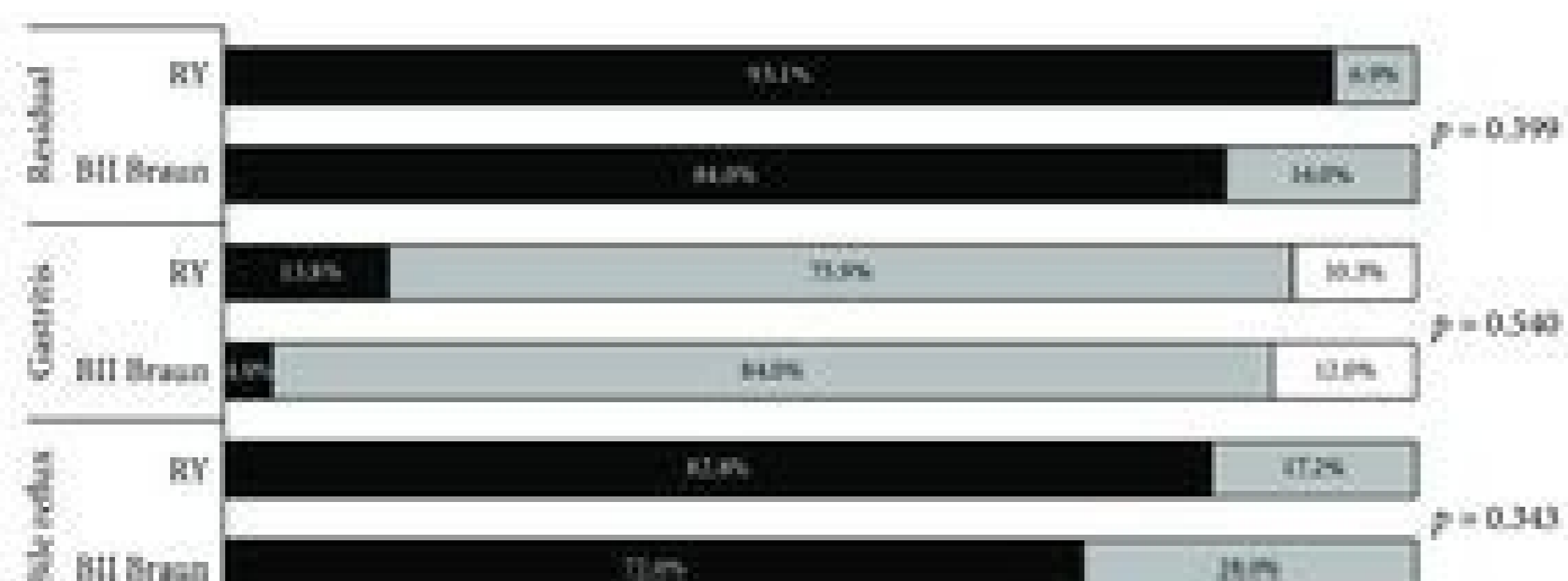


[Continue](#)



	Bil Braun (n = 26)	Roux-en-Y (n = 30)
sected stomach (cm)		
curvature	12.4 ± 2.6	13.7 ± 2.6
curvature	19.0 ± 3.9	22.0 ± 4.9
weight (kg)		
baseline	61.9 ± 10.7	67.3 ± 13.1
baseline 3 months	58.9 ± 10.3	61.8 ± 12.0
baseline 6 months	58.3 ± 10.3	60.7 ± 12.2
weight (kg)		
baseline	23.3 ± 3.3	24.0 ± 3.5
baseline 3 months	22.2 ± 3.3	22.0 ± 3.2
baseline 6 months	21.9 ± 3.0	21.6 ± 3.2
GI symptoms	3 (11.5%)	9 (30.0%)
nausea	3	3
vomiting		2
diarrhea		1
constipation		1
abdominal pain		2

Values are presented as number (%) or mean ± standard deviation. GI = gastrointestinal.



EL ESTOMAGO

El estómago está controlado por el sistema nervioso autónomo, siendo el nervio vago el principal componente. La acidez del estómago está controlada por tres moléculas que son la acetilcolina, la histamina y la gastrina.



